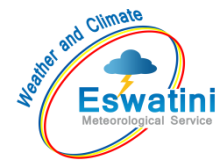


# AGROMETEOROLOGICAL BULLETIN

Doc No: TEA 3/3/7/2 F-004  
Revision No: 1  
Effective Date: 01.07.2017  
Page No: 1 of 5  
Approved by:



**REPORTING PERIOD:**  
**11 – 20 DECEMBER 2024**



**ISSUE No.: 08**

**SEASON: 2024/25**

**RELEASED: 24/12/2024**

## CONTENTS

CONTENTS .....	1
HIGHLIGHTS .....	1
RAINFALL AND TEMPERATURES .....	2
RAINFALL .....	2
TEMPERATURES .....	3
MAIZE AND OTHER CROPS.....	3
CURRENT FARMING ACTIVITY .....	3
MAIZE CROP STAGE AND CONDITION ..	3
OTHER CROPS .....	3
LIVESTOCK AND PASTURES .....	4
WATER SITUATION .....	4
MEDIUM-TERM OUTLOOK .....	4
RAINFALL .....	4
TEMPERATURE.....	4
SOIL MOISTURE .....	4
WIND SPEED .....	4

## HIGHLIGHTS

- An increase in rainfall observed...
- Fair vegetation condition...
- Few reported land preparation activities...
- Improvement in rainfall is anticipated...
- Cool to warm temperatures forecasted...
- Improvement in soil moisture expected...

Compiled and Issued by: Agrometeorological Unit,

Swaziland Meteorological Service, Ministry of Tourism and Environmental Affairs.

Box 2652, Mbabane, Swaziland. ☎ (+268) 2404 8859 / 2404 6274. Fax: 2404 1530

E-mail: [dudu@swazimet.gov.sz](mailto:dudu@swazimet.gov.sz)

## AGROMETEOROLOGICAL BULLETIN

Doc No: TEA 3/3/7/2 F-004

Revision No: 1

Effective Date: 01.07.2017

Page No: 2 of 5

Approved by:

## RAINFALL AND TEMPERATURES

### RAINFALL

Significant rainfall was received in the 2<sup>nd</sup> dekad of December 2024 (**Figure 1**) and (**Map 1**).

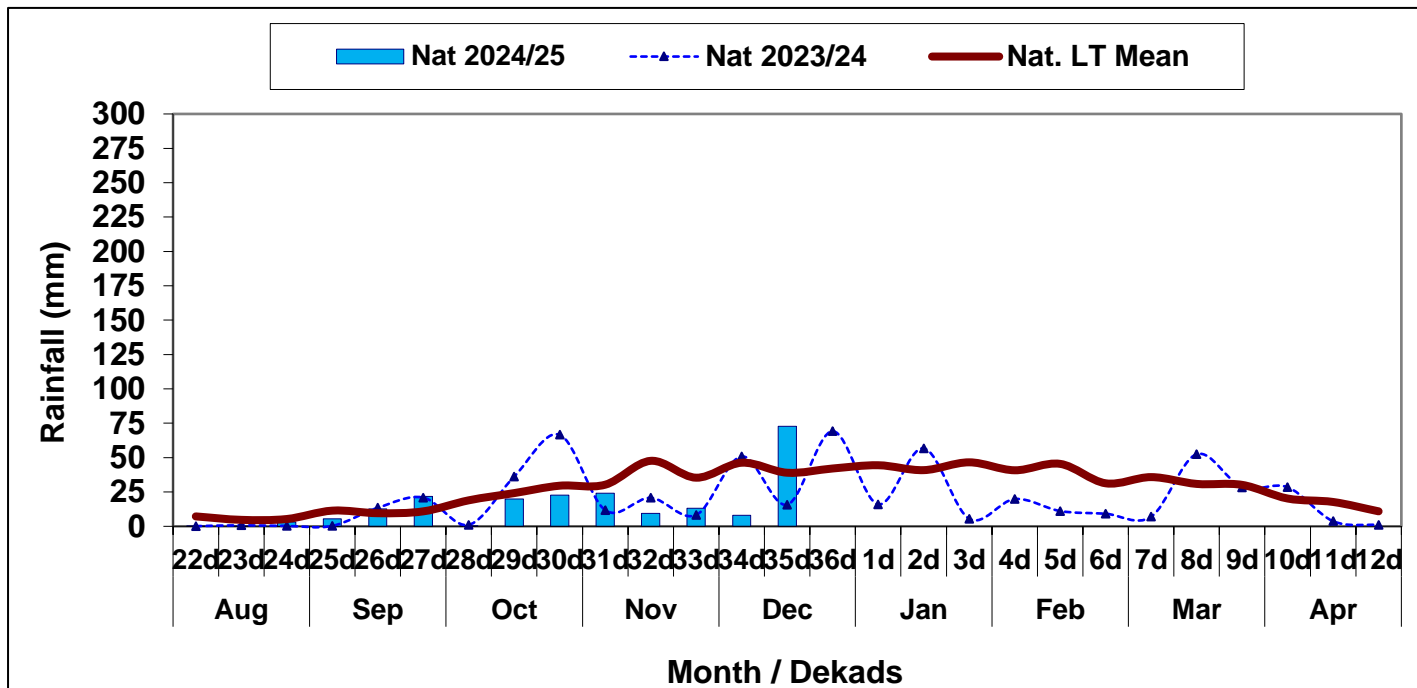
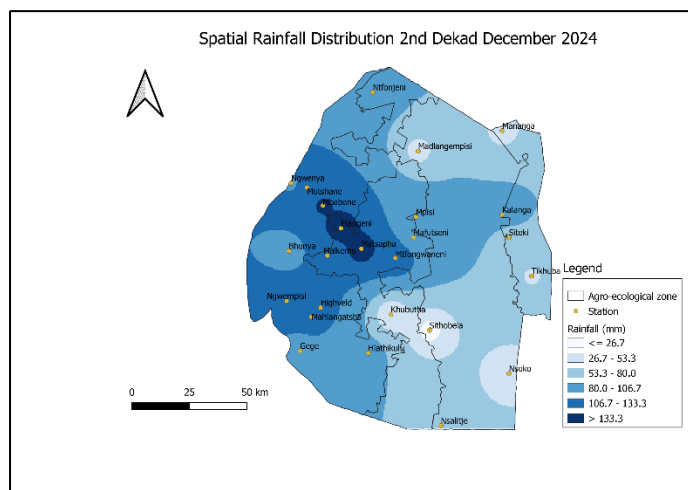
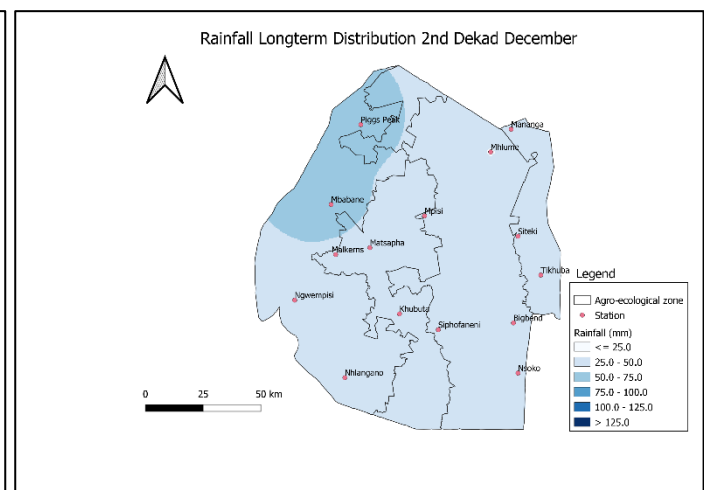


Figure 1: Rainfall distribution 2<sup>nd</sup> dekad December 2024



Map 1: Spatial rainfall distribution 2<sup>nd</sup> dekad December 2024



Map 2: Rainfall Longterm distribution 2<sup>nd</sup> dekad December

Compiled and Issued by: Agrometeorological Unit,

Swaziland Meteorological Service, Ministry of Tourism and Environmental Affairs.

Box 2652, Mbabane, Swaziland. (+268) 2404 8859 / 2404 6274. Fax: 2404 1530

E-mail: [dudu@swazimet.gov.sz](mailto:dudu@swazimet.gov.sz)

# AGROMETEOROLOGICAL BULLETIN

Doc No: TEA 3/3/7/2 F-004

Revision No: 1

Effective Date: 01.07.2017

Page No: 3 of 5

Approved by:

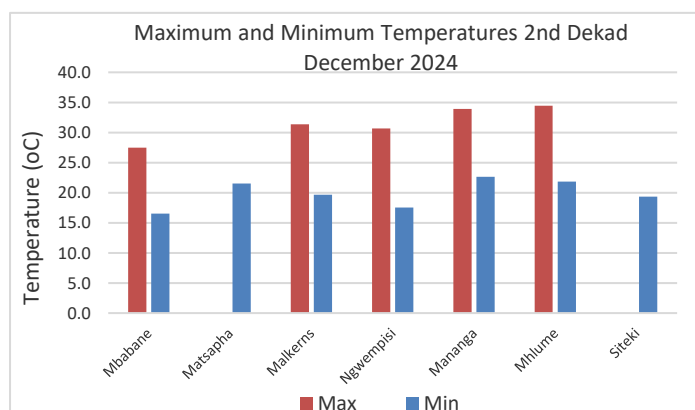
All the Agro-ecological zones observed Normal to Above Normal rainfall during the the reporting period (**Table 1**).

**Table 1:** Rainfall (mm) 2<sup>nd</sup> dekad December 2024

	HV	MV	LV	LP
2023/24	25	21	8	13
Average	54	39	29	32
2024/25	80	100	31	62
Anomaly	25	60	2	30

## TEMPERATURES

Cool to warm temperatures were observed during the reporting period (**Figure 2**).



**Figure 2:** Maximum and Minimum temperatures 2<sup>nd</sup> dekad of December 2024

## MAIZE AND OTHER CROPS

### CURRENT FARMING ACTIVITY

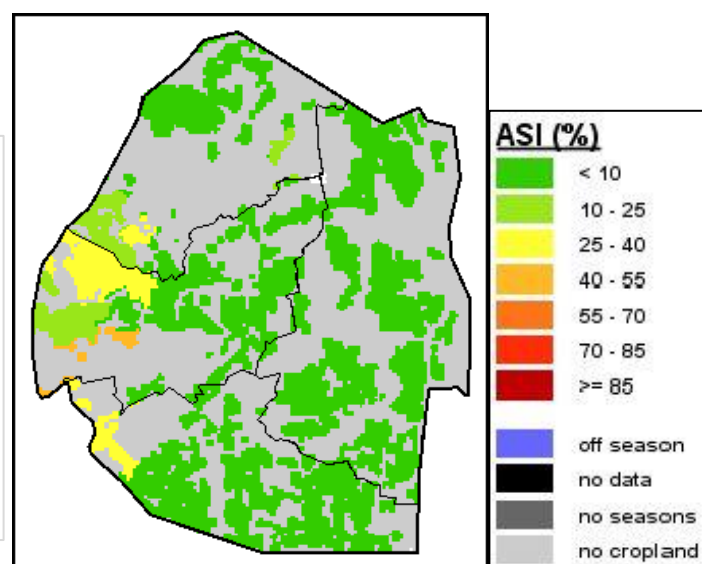
Few farmers have commenced land preparation.

### MAIZE CROP STAGE AND CONDITION

Some farmers have planted Maize.

### OTHER CROPS

No other crops have been reported to have been planted.



**Image 1:** Agriculture Stress Index 2<sup>nd</sup> dekad December 2024 Source: FAO-GIEWS

Compiled and Issued by: Agrometeorological Unit,

Swaziland Meteorological Service, Ministry of Tourism and Environmental Affairs.

Box 2652, Mbabane, Swaziland. ☎ (+268) 2404 8859 / 2404 6274. 📠 Fax: 2404 1530

E-mail: [dudu@swazimet.gov.sz](mailto:dudu@swazimet.gov.sz)

## AGROMETEOROLOGICAL BULLETIN

Doc No: TEA 3/3/7/2 F-004

Revision No: 1

Effective Date: 01.07.2017

Page No: 4 of 5

Approved by:

### LIVESTOCK AND PASTURES

Livestock is in fair condition and rangelands are reported to be in fair condition.

### WATER SITUATION

Some dam levels are very low as a result of recent dry and hot conditions.

### MEDIUM-TERM OUTLOOK

#### RAINFALL

Increase in rainfall is expected in the outlook period.

#### TEMPERATURE

Warm to hot temperatures are anticipated in the outlook period.

#### SOIL MOISTURE

An improvement in soil moisture is expected in the outlook period.

#### WIND SPEED

Wind will generally be light to moderate in the outlook period

**NB: Outlook period is ten days from date of issue**

Compiled and Issued by: Agrometeorological Unit,

Swaziland Meteorological Service, Ministry of Tourism and Environmental Affairs.

Box 2652, Mbabane, Swaziland.  (+268) 2404 8859 / 2404 6274. Fax: 2404 1530

E-mail: [dudu@swazimet.gov.sz](mailto:dudu@swazimet.gov.sz)

## AGROMETEOROLOGICAL BULLETIN

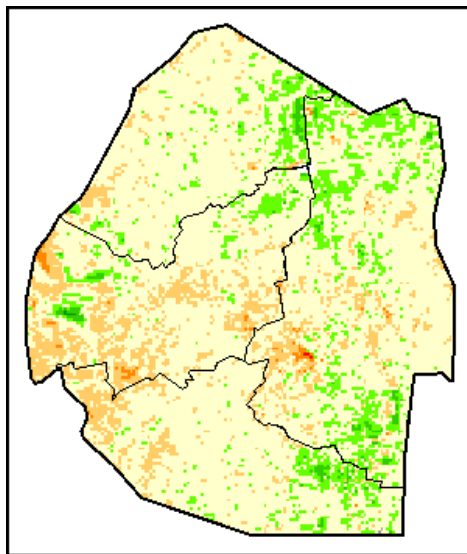
Doc No: TEA 3/3/7/2 F-004

Revision No: 1

Effective Date: 01.07.2017

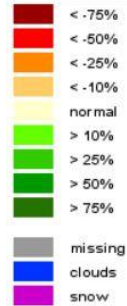
Page No: 5 of 5

Approved by:

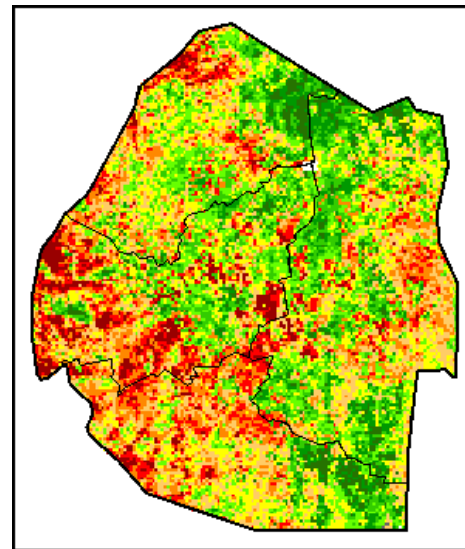


### Legend

#### Difference to LTA

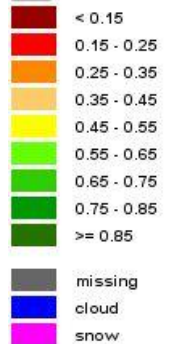


**Image 2: Normalized Difference Vegetation Index (NDVI)  
Anomaly (2<sup>nd</sup> Dekad December 2024)**  
Source: FAO-GIEWS



### Legend

#### VHI



**Image 3: Vegetation Health Index (VHI) (2<sup>nd</sup> Dekad  
December 2024)**  
Source: FAO-GIEWS

Compiled and Issued by: Agrometeorological Unit,

Swaziland Meteorological Service, Ministry of Tourism and Environmental Affairs.

Box 2652, Mbabane, Swaziland. ☎ (+268) 2404 8859 / 2404 6274. Fax: 2404 1530

E-mail: [dudu@swazimet.gov.sz](mailto:dudu@swazimet.gov.sz)